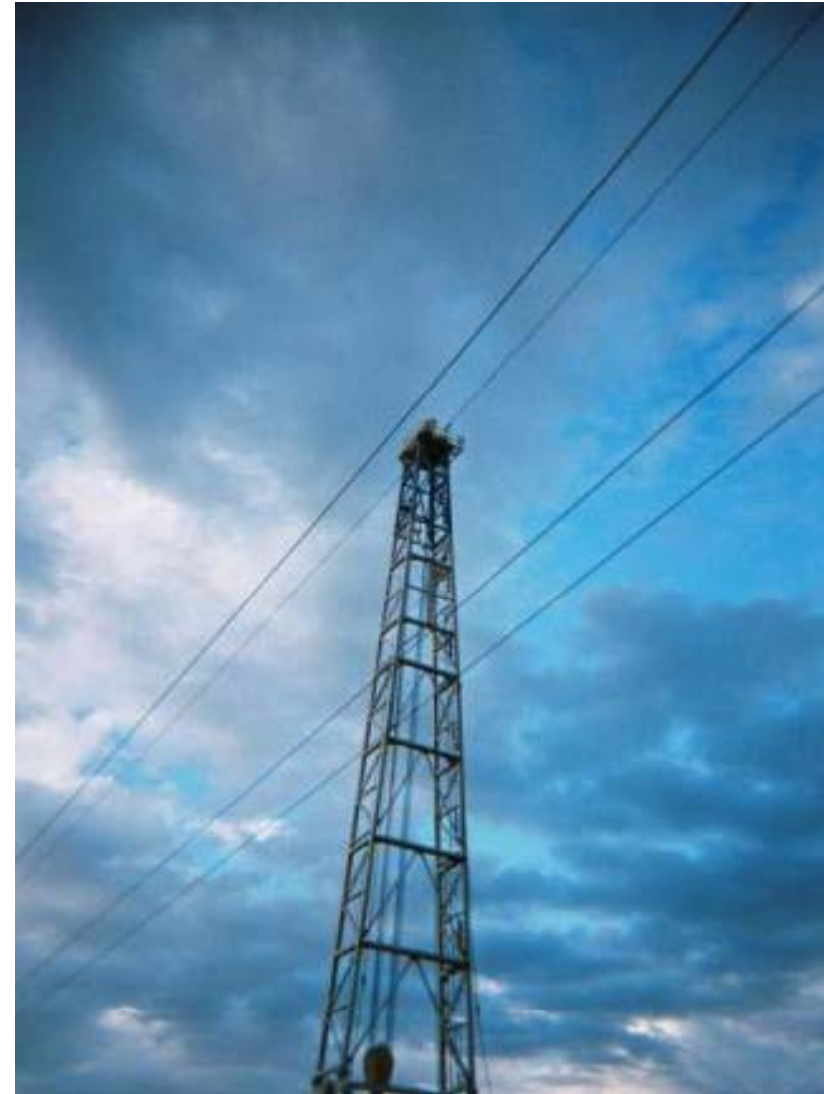


O.I.M.E. SL5 (REF#1910N)



- ⦿ 750 hp SL-5 OIME drawworks,
- ⦿ 3-engine compound powered by (3) 3408 Cat (365 hp),
- ⦿ 131' mast rated for 550,000 lbs.,
- ⦿ Parco fast move swing up substructure,
- ⦿ Continental Emsco 800 hp triplex mud pumps tail driven,
- ⦿ 1000 barrel mud tanks with mud cleaning equipment, necessary handling tools,
- ⦿ 174 JTS of 4-1/2" drill pipe,
- ⦿ 26 drill collars,
- ⦿ (1) 20' container of spare parts,
- ⦿ Rig is field ready.



O.I.M.E. SL5 (REF#1910N) CONTINUED

