



## IDECO RAMBLER H37 (REF#1924N)

- ⦿ 1979 IDECO Rambler H37 Single Drum Carrier-Mounted Drilling Unit
- ⦿ LEBUS Grooved f/1" Drill Line
- ⦿ Ezy-Torque Hydraulic Breakout
- ⦿ PARMAC 15" Double Hydromatic Brake p/b DETROIT 12V-71 Diesel Engine Air Starter
- ⦿ ALLISON 5860-4 Transmission
- ⦿ IDECO 104'H Telescoping Mast
- ⦿ Hydraulically Raised & Scoped
- ⦿ Single 3-Stage Hydraulic Raising Ram
- ⦿ Racking Board, Standpipe
- ⦿ All Mounted on IDECO BIR5525 5-Axle Carrier
- ⦿ Hydraulic Halliburton Wireline Measuring Device
- ⦿ BRADEN Winch
- ⦿ Water Tank
- ⦿ Fuel Tank
- ⦿ Folding Walkway
- ⦿ Stairs
- ⦿ Safety Rails
- ⦿ 12.00x20 Tires
- ⦿ Budd Wheels

### **SUBSTRUCTURE**

- ⦿ 8'H Substructure w/Rotary Beams, Stairs, Safety Rails

### **DRILL MATS**

- ⦿ New folding steel rig mats.

### **ROTATING EQUIPMENT**

- ⦿ New 27-1/2" Rotary Table
- ⦿ IDECO Tru-Line 200-Ton Swivel
- ⦿ New 4-1/4" x 40'L Square Kelly

### **AUXILIARY EQUIPMENT**

- ⦿ Clipper-Type Weight Indicator
- ⦿ SATELLITE Automatic Driller
- ⦿ 4"ID x 55'L Rotary Hose
- ⦿ (2) 3"ID x 6'L Vibrator Hoses
- ⦿ (2) 8" ID x 14'L Suction Hoses
- ⦿ Fluorescent & Mercury-Vapor Rig Lights w/Wiring

### **TRAVELING EQUIPMENT**

- ⦿ IDECO Shorty 150-Ton Block/Hook Combination w/(4)
- ⦿ Sheaves, New 1" Line
- ⦿ 3" x Approximately 72" Elevator Links

## IDECO RAMBLER H37 (REF#1924N) CONTINUED



### **RIG HOUSES**

- ⦿ (2) Shop built, 8' x 40' Insulated Doghouse w/LPG Heater, Lockers, Tool Racks, Parts Racks

### **FUEL TANK**

- ⦿ 2,000-Gallon Fuel Tank

### **HANDLING TOOLS**

- ⦿ BJ Type B Rotary Tongs w/(4) Sets Heads
- ⦿ WOOLLEY 150-Ton Center Latch Drill Collar Elevators
  - (2) 4-1/2" Drill Pipe Slips
- ⦿ Type C Drill Collar Safety Clamp
  - (6) Drill Collar Lift Subs
  - (12) Assorted Changeover Subs
- ⦿ 10" Shock Sub
- ⦿ 22-5/8" Roller Reamer
- ⦿ 28-3/4" Roller Reamer
- ⦿ Approximately 200' of 1" Drill Line w/Spool, Stand

### **POWERED PUMP**

- ⦿ WILSON 600 Duplex Mud Pump, Forged Steel Fluid End w/Quick-Change Caps, Pulsation Dampener, Shear Relief Valve, Drive Assembly p/b DETROIT Twin 6-71 Diesel Engines w/Air Starter, Radiator, Gauges, Master Skidded

### **POWERED PUMP**

- ⦿ EMSCO D-300 Duplex Mud Pump, Cast Fluid End w/Bolted Caps, Surge Chamber, Shear Relief Valve, Pressure Gauge, Drive Assembly p/b DETROIT Twin 6-71 Diesel Engines w/Electric Starter, Radiator, Gauges, Master Skidded

### **DRILL PIPE**

- ⦿ 2294' (74 Joints) 4-1/2", 16.60#, Range 2 Drill Pipe w/4-1/2"XH, BN Tool Joints, 6" OD Avg, DWB

### **DRILL COLLARS**

- ⦿ (6) 9"OD x 3-1/2"ID x 31'L Spiral Drill Collars w/7-5/8" Reg.
- ⦿ (3) 11"OD x 3-1/2"ID x 31'L Spiral Drill Collars w/7-5/8" Reg.

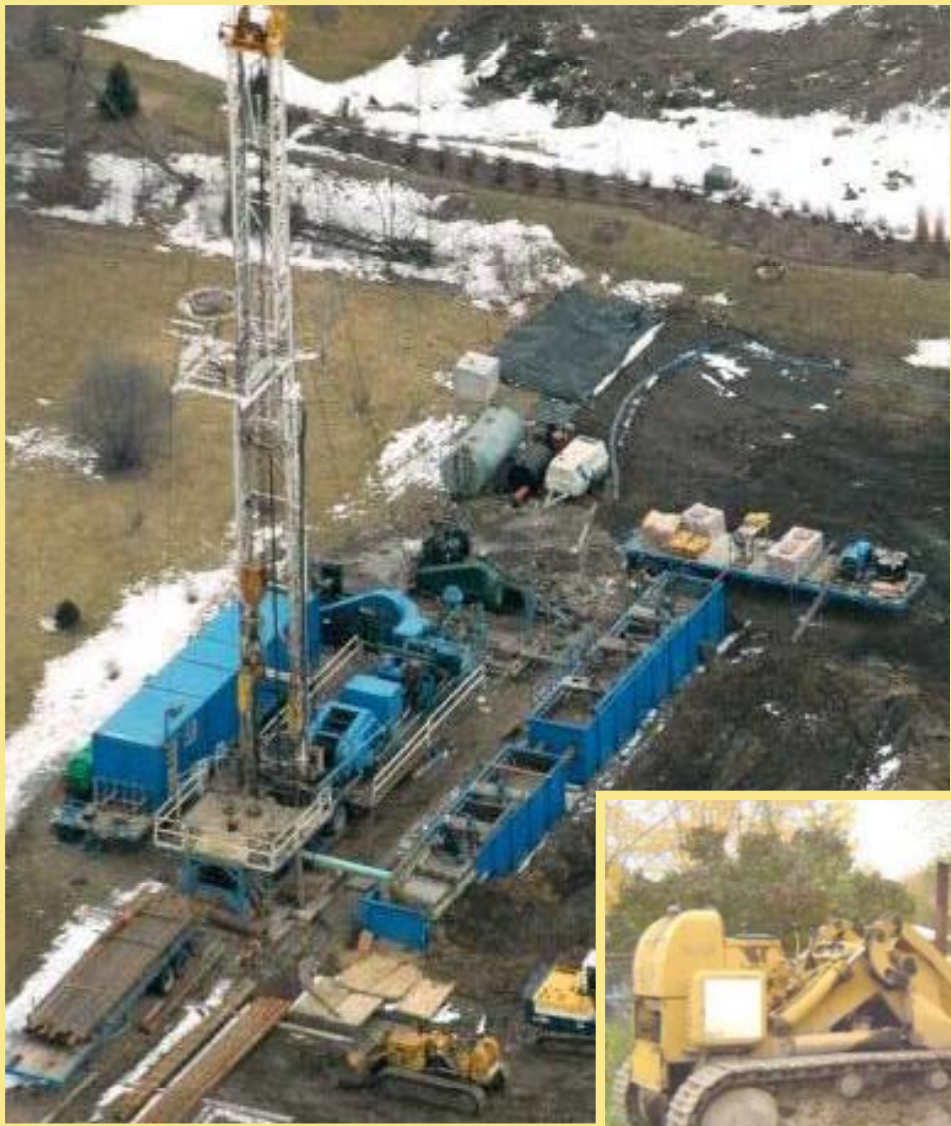
### **ROLLING STOCK/CONSTRUCTION EQUIPMENT**

- ⦿ 1964 CAT 977H Crawler Loader,
- ⦿ Komatsu PL160 Hydraulic Excavator
- ⦿ (2) 40' tandem axle float trailers

### **MUD SYSTEM**

- ⦿ (2) 8' x 7'H x 30'L Steel Mud Pits
- ⦿ Shale Shaker
- ⦿ Desander
- ⦿ New, unused Mission 6" x 8", 60 HP desanding pump
  
- ⦿ Currently drilling.

IDECO RAMBLER H37 (REF#1924N) PHOTOS



IDECO RAMBLER H37 (REF#1924N) PHOTOS

